

**This is**

# THE IMI CHURCH

Unless the Lord builds the house,  
its builders labour in vain.

Unless the Lord watches over the city,  
the watchmen stand guard in vain.

**Psalm 127:1**

IMI  KIRKEN

Address:

Gunnar Warebergsgt.15

4021 Stavanger

Tel. +47 5184 2160

[www.imikirken.no](http://www.imikirken.no)



IMI  KIRKEN

### Our vision:

Every person is valuable. We want to help them become dedicated followers of Jesus Christ.

### Our purpose:

To lead people to Jesus Christ and his family and help them become mature Christians, equipping them for service in the church and society and for mission in the world, in everything bringing honour to the name of God.



## Onwards and outwards ....

It is a characteristic of everything living that it doesn't stand still. The IMI church doesn't stand still, either. But what is the IMI church, you might ask? Not the church building and all the things that happen there. No, the church is you and me, ordinary people who want to be a part of the vision of making valuable people into dedicated followers of Jesus Christ - people who want to receive all the good things God has for us and who want to be in on what God is doing!

Remember: the Lord is far more interested in what he can put into us than what he can get out of us, more interested in having a relationship with us than in using us. He wants our hearts, not just our efforts. Jesus said: I no longer call you servants... I call you friends. John 15:15.

The IMI church consists of all different kinds of people on their way through life. We have found that it is an exciting place where the Lord surprises us over and over again. I hope you will feel welcome and feel included, challenged and inspired while we together move forward with God. We don't always know what the future will bring, but we do know who holds the future in his hands!

Our calling and main focus as a church is both our neighbour locally and all people to the ends of the earth.

In an active and dynamic church, however, it is important to know something about who we are, and to know the vision, purposes and values that underlie our activities.

Martin Cave  
Pastor

### Translation into English

All/most of our services are translated into English/ we aim to provide English translation in all our services.

Pick up a set of headphones at the sound desk (at the back of the main auditorium) and put them on with the middle section under your chin. You can sit anywhere in the church, but the text on the middle section must be facing the platform. The headsets have one switch for channel (if you hear nothing on one channel, try the other one) and one for volume.

During ministry time at the end of the service there will always be someone at the front who will be happy to pray with you in English.

You might also like to join our English-speaking cell group, which meets every week.  
For more information call 9900 3431, Ellen Crocker.

# Why do we as a church exist?

Because that is what the Lord wants!

The Great Commandment and the Great Commission give us the reason, which we have broken down into five purposes:

*"Jesus replied: Love the Lord your God with all your heart and with all your soul and with all your mind. This is the first and greatest commandment. And the second is like it: Love your neighbour as yourself."*

Matt. 22:37-39

*"All authority in heaven and on earth has been given to me. Therefore go and make disciples of all nations, baptising them in the name of the Father and of the Son and of the Holy Spirit, and teaching them to obey everything I have commanded you"*

Matt.28: 18-20

**These verses identify the five main areas or purposes for the life of a church:**

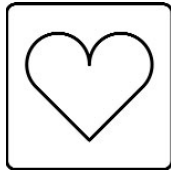
To "love the Lord with all your heart" is worship

To "baptise them" is fellowship

To "teach them to obey everything" is discipleship and growth

To "love your neighbour as yourself" is service

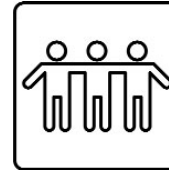
To "go and make disciples" is outreach



## Worship

- a heart relationship to God

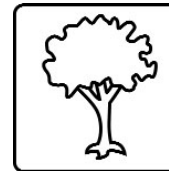
The Bible tells us that Jesus wants a personal relationship with each person. Not a superficial relationship at a distance, but a heart-to-heart relationship. God's love is perfect and unconditional, and his rescue mission in sending Jesus demonstrates this. We are loved for who we are, not for what we do, and nothing can change that. God's heart is yearning for us and he is calling us to love him back. We love because he first loved us (1. John 4:19). Every person on earth has been given the ability to love, but we express our love in different ways. God wants everything in our lives to be an expression of our love for him.



## Fellowship

- belonging to one another

We have not been created to live on our own. God's new fellowship is not a network which we connect to and disconnect from as the whim takes us. On the contrary, the Bible uses the word 'family'. God is our father, and that makes us Christians brothers and sisters. The family is a place where we belong whatever happens. It is a place of safety, openness, honesty and truth. The apostle Paul uses the picture that we Christians are the body of Jesus. We belong to each other and we need each other; if the body of Jesus is to work as intended. It is a place where we both give and receive.

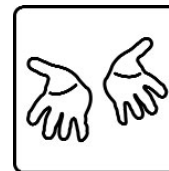


## Growth

- reaching our potential

It is natural for a tree to grow. Everyone knows that a sapling that is planted in the ground is not meant to remain a sapling. It has the potential to grow bigger, stronger and deeper and to

become a tree. It is the same with our faith. When we receive Jesus, a new life is born inside us. This life is meant to grow and become a bigger and bigger part of us. God wants us to get to know him better and better, day by day. And as we grow, we will develop roots that reach deep into God, a strong trunk that will weather any storm and branches that bear good fruit. There are always new aspects of God to discover and learn about. That's why we should never stop growing as Christians.

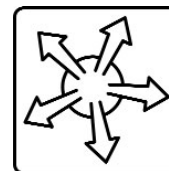


## Service

- serving other people with God-given talents and in God's power

You have been saved to serve God! The Lord has given you a ministry in his church and an assignment in the world. For Christians, service is not an optional extra. The Bible says: "For we are God's workmanship, created in Christ Jesus to do good works" Eph. 2:10.

You are God's work of art, you are a true original created to complete his purpose for your life. Christian service is therefore to make your abilities and talents available to the almighty God. This is no small matter! God loves using the people he has created to bless others.



## Outreach

- going out

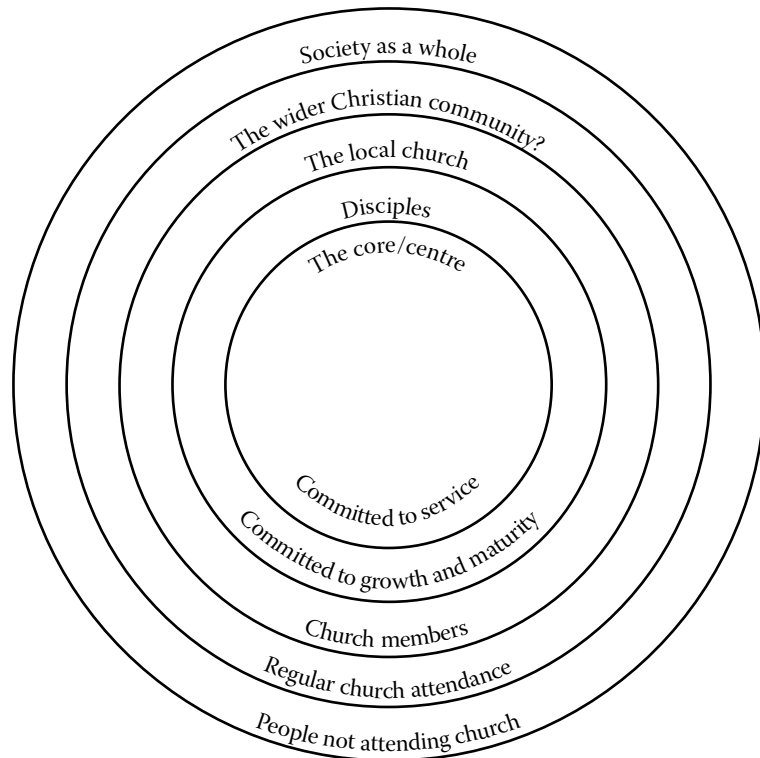
Every single person is valuable to God; he demonstrated that when he sent Jesus. Nothing is more important to him than everyone getting to hear of his love, and having the opportunity to receive his grace. Without Jesus any human being is eternally lost! We are called to participate in God's rescue mission for this world. Our foundation is God and the church, but from there we must go into all the world, so that others can be saved and become followers of Jesus Christ.

## Our strategy

The goal of the IMI church is to lead people to Jesus Christ and his family. We want to help them become mature Christians and equip them for service in the church and society as well as for mission into the world, in every way bringing honour to God.

**This happens as the IMI church seeks to draw people further into the church by encouraging a commitment in the following areas:**

- Membership is a commitment to Jesus Christ and IMI's vision
- Personal growth and discipleship are a commitment to habits that are necessary for spiritual growth.
- Equipment and service represent a commitment to discovering the gifts and abilities God has given us and using them to serve him and other people.
- Mission is a commitment to share the good news of Jesus Christ with others



## Our core values

**These statements express our core values as we seek to realise the vision of our church:**

1. The Bible is the foundation for a true understanding of God, salvation, personal transformation and it also provides guidelines for Christian living.
2. The church's top priority is prayer and worship
3. The church is called to communicate the Gospel in a culturally relevant way.
4. The church is a genuine?? Jeg er ikke helt sikker på hva dere mener her? fellowship.
5. The church is to continue the works of Jesus in the power of the Holy Spirit.
6. The church is a place for equipping and serving.
7. Quality and creativity honour the Lord and attract and inspire people.
8. Growth is natural, both for individuals and a church.
9. The church is called to influence society.

## Our structure

The IMI church is an independent church associated with Normisjon, which again is a free and independent organisation within the Evangelical Lutheran Church of Norway. This means that the IMI church is authorised to carry out Holy Communion, baptism, confirmation, weddings and funerals. The Bible and the Church of Norway's confession ?? doctrinal statement?? form the basis of all activities in Normisjon. This means that the Word of God - as we meet it in the Bible - is our supreme and final authority in all issues related to the Christian faith and Christian living.

### The main thrust of Evangelical Lutheran doctrine can be summed up in a few points:

#### Scripture alone

The Bible is the final authority for what is true and false doctrine.

#### Faith alone

Salvation takes place through faith alone, and good works play no part. The Holy Spirit creates faith through the Word of God and the sacraments.

#### Grace alone

Justification through faith alone is a key point in Lutheran doctrine. Salvation is free, because Jesus atoned for our guilt by his death.

#### Our view of mankind

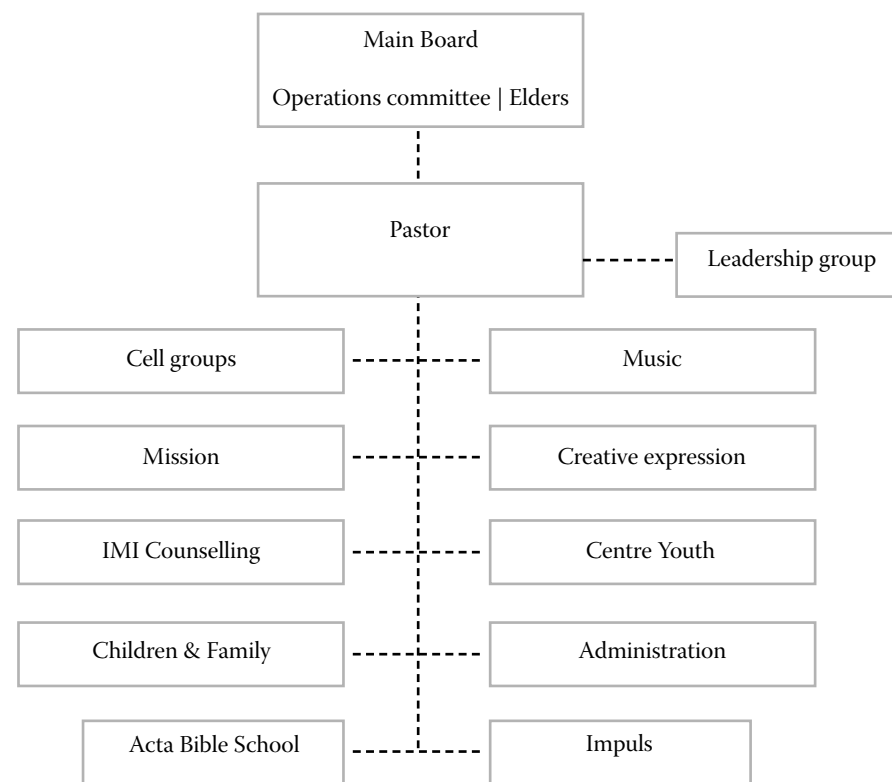
Each human being is created the image of God and is immensely valuable to him. However, we also believe that a human being is born sinful and therefore needs salvation. To be saved we are all totally dependent on God's grace.

#### The sacraments

Baptism and Communion are sacraments where God in a visible way - in water, bread and wine - gives us his invisible grace.

While the IMI church bases its life and work on a Lutheran understanding of Christianity, this does not mean that we will judge or separate ourselves from other believers or reject people from other denominations. Experience shows that where there is a clear understanding of doctrine??, it will also be easier to understand, recognise and accept others. For this reason members of other denominations may also become members of our church, as long as they are loyal to the doctrines of our church.

## The organisation of the IMI church:



The Main Board is the governing body of the IMI church. The Main Board consists of an operations committee, whose members are elected by the Annual General Meeting and Elders who are approved by the AGM. The Elders are

responsible for the church's spiritual life, growth and development, while the operations committee takes care of the financial and practical side of our work.

# Membership

*Anyone who is loyal to the core values / principles / purposes / doctrinal statement / ?? of the church and has attended the courses required for membership at any time, may become a member of the IMI church. Our members are encouraged / expected / challenged ?? to live as Christians in accordance with the faith and confession of the church, regularly gathering around the Word of God and making use of the church's means of grace.*

Section 3 of the IMI church bylaws.

## Criteria for membership in the IMI church:

### Pre-Agape course

Teaching some important principles of faith, over two evenings.

### The Agape weekend

The goal of the weekend is an encounter with the love (Agape) of God, which will change your life and build Christ's character in you. The weekend consists of teaching, worship, prayer and service. We spend the weekend at a hotel or camp location.

### Post-Agape

Teaching on the Christian life, over four evenings.

### Join a cell group

Our cell groups get together for one hour, once a week. Here each person is helped to grow, to live as a believer and to reach other people with the Gospel. Most of the cell groups are men only or women only, but both men and women are welcome in our English-speaking cell group.

### IMI-Seilas 1 - our membership course

The course shows what it means to be a Christian and to be an integrated part of the church. We look at our vision, goals and strategy. The course lasts for 3-4 hours over one evening.

### Realise the vision of the church by:

1. Using your abilities and talents in the church and the general society
2. Sharing financial responsibility for the church

# Business activities of the IMI church

We have a long and healthy tradition of business activity.

IMI-Holding AS is a company that owns the other companies listed below.

IMI-Holding AS is again owned by the IMI church.

- Our bookshop **IMI Bok & Media AS** is located by the Breiavatnet lake in the middle of Stavanger. You will also find a small branch of **IMI Bok & Media** in our church, by the side entrance.
- The main **Alpha** office which serves course organisers throughout Norway is located in the IMI church. Alpha Norge AS promotes and helps organise Alpha courses in Norway. As well as running the Alpha introductory courses into the Christian faith, there are training conferences for Alpha course leaders, and books and other materials are sold.
- **AS Bergelandsgaten 30** owns four properties in Stavanger, among them Bergelandsgaten 30 and Mosvangen hybelhus, which provides student housing during the academic year and is a youth hostel during the summer.
- **IMI-Tjensvoll Eiendom AS**, whose purpose is to realise and manage the property activities of the IMI church in the Tjensvoll area. The company hires out IMI-Forum to the IMI church, the exhibition organiser Stavanger Forum, the ONS foundation and others.